

84-367034

AMENDMENT

This Amendment dated October 23, 1984, by MINTO BUILDERS (FLORIDA), INC., a Florida corporation ("Developer").

W I T N E S S E T H:

WHEREAS, Developer recorded that certain Declaration of Condominium of Karanda Village IV-"A", a Condominium in Official Records Book 12034 at Page 448 of the Public Records of Broward County, Florida ("Declaration"); and

WHEREAS, Buildings No. 3 and 13 of said condominium were not complete at the time of recordation of the Declaration; and

WHEREAS, said Buildings No. 3 and 13 are now substantially complete and Developer desires to amend the Surveyor's Certificate attached as Exhibit "B" to said Declaration in order to reflect this fact; and

WHEREAS, Article 8.B. of the Declaration provides that same may be amended by the Developer at any time without the consent of any person.

NOW, THEREFORE, in accordance with §718.104(4)(e), Florida Statutes, Developer hereby amends the Declaration by including therein Exhibit "A" attached to this Amendment.

IN WITNESS WHEREOF, Developer has executed this Amendment on the date set forth above.

Signed, sealed and delivered in the presence of:

MINTO BUILDERS (FLORIDA), INC., a Florida corporation (SEAL)

[Signature]
[Signature]

By: [Signature]

STATE OF FLORIDA)
) ss:
COUNTY OF BROWARD)

The foregoing Amendment was acknowledged before me this 23rd day of October, 1984, by Michael Greenberg, President of Minto Builders (Florida), Inc., a Florida corporation, on behalf of the corporation.

[Signature]
Notary Public,
State of Florida at Large

My commission expires:
NOTARY PUBLIC STATE OF FLORIDA
MY COMMISSION EXP. AUG 15, 1987
BOND# 1199-100, 1MSU-14CF EXP

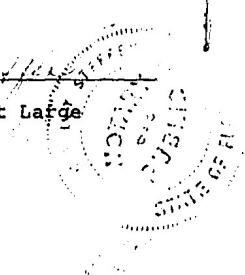
Prepared by the Office of:

HOLLAND & KNIGHT
By: Irwin J. Fayne, Esq.
One Corporate Plaza
110 East Broward Boulevard
Sixteenth Floor
Fort Lauderdale, Florida 33301

870700069ad1022:75
10/22/84

Return to: Gold Coast Title Co.
75 S. E. 3rd Street
Boca Raton, Florida 33432

34 OCT 25 PM 4:03
OFF 12085pg 993



268

Exhibit "A"

EXHIBIT "B" TO DECLARATION OF CONDOMINIUM OF
KARANDA VILLAGE IV - "A", A CONDOMINIUM

CERTIFICATION:

THE UNDERSIGNED SURVEYING FIRM CERTIFIES THAT THE CONSTRUCTION OF THE IMPROVEMENTS TO COMPRISE BUILDINGS 3 AND 13 KARANDA VILLAGE IV - "A", A CONDOMINIUM, IS SUBSTANTIALLY COMPLETE SO THAT THE MATERIAL WHICH COMPRISES THIS EXHIBIT "B" - TO THE DECLARATION OF CONDOMINIUM OF KARANDA VILLAGE IV - "A", A CONDOMINIUM, TOGETHER WITH THE PROVISIONS OF SAID DECLARATION OF CONDOMINIUM DESCRIBING THE CONDOMINIUM PROPERTY, ARE AN ACCURATE REPRESENTATION OF THE LOCATION AND DIMENSIONS OF SAID IMPROVEMENTS, AND THE IDENTIFICATION, LOCATION, AND DIMENSIONS OF THE COMMON ELEMENTS WITHIN THE CONDOMINIUM AND OF EACH UNIT WITHIN THE CONDOMINIUM CAN BE DETERMINED FROM SAID MATERIALS. FURTHER, ALL PLANNED IMPROVEMENTS, INCLUDING, BUT NOT LIMITED TO LANDSCAPING, UTILITY SERVICES AND ACCESS TO BUILDINGS 3 AND 13 COMMON ELEMENT FACILITIES SERVING BUILDINGS 3 AND 13 AS SET FORTH IN SAID DECLARATION ARE SUBSTANTIALLY COMPLETED.

CCL CONSULTANTS, INC.

10/19/04
DATE

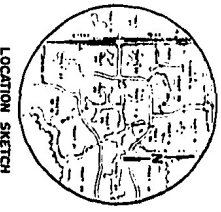
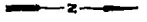
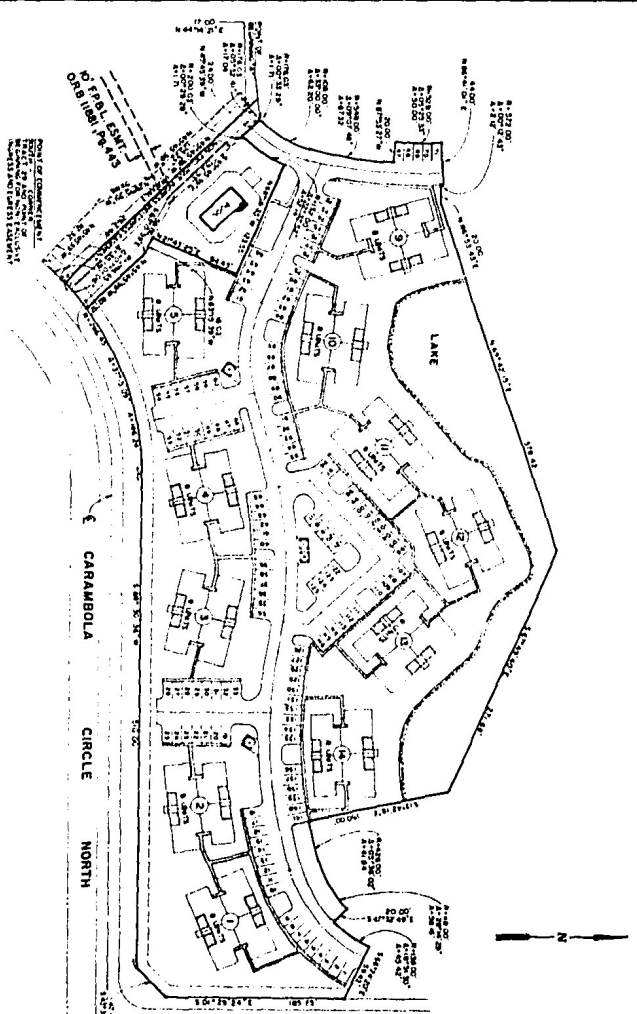
I. Mohamed
ISHMAEL S. MOHAMED
REGISTERED LAND SURVEYOR #2464
STATE OF FLORIDA

REF 12085pg 994

DEF 12085P6 995

KARANDA VILLAGE IV - "A", A CONDOMINIUM

EXHIBIT "B" TO DECLARATION OF CONDOMINIUM OF



LEGEND

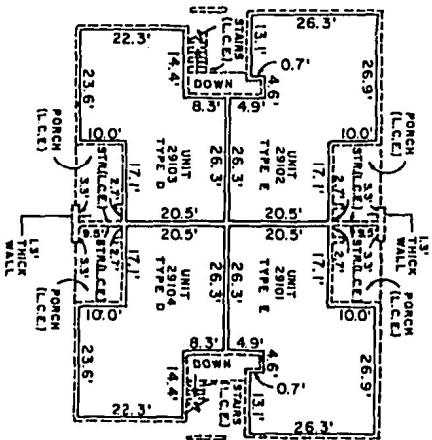
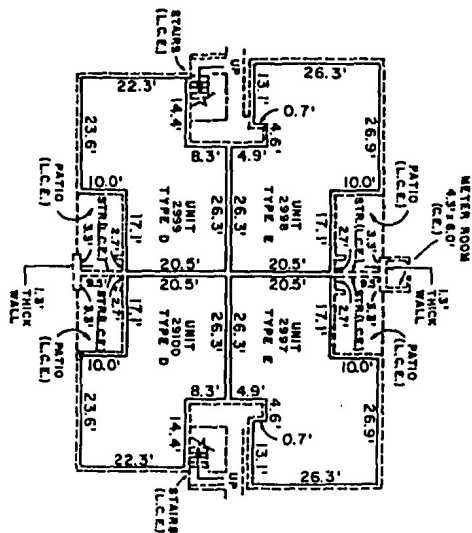
- 1. CONDOMINIUM UNIT
- 2. COMMON AREA
- 3. TRACT 16

CCL	CCL CONSULTANTS, INC.
10000 N.W. 42nd Avenue, Suite 1000 Miami, Florida 33188 Tel: 305-551-1111	
EXHIBIT "B" TO THE DECLARATION OF CONDOMINIUM OF KARANDA VILLAGE IV - "A"	2249
DATE: 11/19/88	5-117

EXHIBIT 'B' TO DECLARATION OF CONDOMINIUM OF KARANDA VILLAGE IV - "A" A CONDOMINIUM

BUILDING 13

OFF REC 12085PG 997



RECORDED IN THE OFFICIAL RECORDS BOOK
OF BROWARD COUNTY, FLORIDA
F. T. JOHNSON
COUNTY ADMINISTRATOR

FIRST FLOOR

MINIMUM UPPER LIMITS OF UNIT 23.07 M.S.L. ELEV.
MINIMUM LOWER LIMITS OF UNIT 15.02 M.S.L. ELEV.

SECOND FLOOR

MINIMUM UPPER LIMITS OF UNIT 32.65 M.S.L. ELEV.
MINIMUM LOWER LIMITS OF UNIT 24.58 M.S.L. ELEV.

DESCRIPTION OF COMMON ELEMENTS

- 1) ALL LAND AND ALL PORTIONS OF CONDOMINIUM PROPERTY NOT WITHIN ANY UNIT OR UNITS, ARE PARTS OF THE COMMON ELEMENTS.
- 2) ALL BEARING WALLS TO THE UNFINISHED SURFACE OF SAID WALLS LOCATED WITHIN A UNIT, CONSTITUTE PARTS OF THE COMMON ELEMENTS.
- 3) ALL CONDUITS AND WIRES TO OUTLETS, ALL OTHER UTILITY LINES TO OUTLETS AND ALL WASTE PIPES REGARDLESS OF LOCATION, CONSTITUTE PARTS OF THE COMMON ELEMENTS.
- 4) THE COMMON ELEMENTS ARE SUBJECT TO CERTAIN EASEMENTS SET FORTH IN THE DECLARATION INCLUDING INGRESS AND EGRESS TO PUBLIC WAYS.

NOTES

- 1) THIS PLAN IS COMPILED FROM PLANS AND DATA FURNISHED BY MINTO BUILDERS (FLORIDA), INC. ARCHITECTURAL PLANS, SUPPLEMENTED BY SUCH FIELD SURVEY AND MEASUREMENTS AS DEEMED NECESSARY BY C.C.L. CONSULTANTS, INC.
- 2) ALL WALLS ARE 0.65" THICK UNLESS OTHERWISE NOTED.
- 3) ELEVATIONS (WHERE DESIGNATED) SHOWN IN FEET, ARE BASED ON MEAN SEA LEVEL DATUM.
- 4) FOR FURTHER DATA REGARDING BOUNDARIES OF THIS UNIT REFER TO THE DECLARATION OF THIS CONDOMINIUM.
- 5) DEPRESSIONS SET FORTH IN THE DECLARATION ARE INCORPORATED HEREIN.

11-9-88 AT-BUILD "A"

LEGEND

IC11	NOTES SET FORTH
IC12	NOTES COMMON ELEMENTS
IC13	NOTES UNITS OTHER UNITS
IC14	NOTES STAIRS
IC15	NOTES ELEVATIONS
IC16	NOTES SEE 50 UNIT ELEVATIONS

CCL CONSULTANTS, INC.

KARANDA VILLAGE IV "A" CONDOMINIUM

BUILDING 13

2249

12/26/84

16-117