

84-343440

AMENDMENT

This Amendment dated OCTOBER 4, 1984, by MINTO BUILDERS (FLORIDA), INC., a Florida corporation ("Developer").

WITNESSETH:

WHEREAS, Developer recorded that certain Declaration of Condominium of Karanda Village IV - "A", a Condominium in Official Records Book 12034 at Page 448 of the Public Records of Broward County, Florida ("Declaration"); and

WHEREAS, Buildings No. 4, 5, 11 and 12 of said condominium were not complete at the time of recordation of the Declaration; and

WHEREAS, said Buildings No. 4, 5, 11 and 12 are now substantially complete and Developer desires to amend the Surveyor's Certificate attached as Exhibit "B" to said Declaration in order to reflect this fact; and

WHEREAS, Article 8.B. of the Declaration provides that same may be amended by the Developer at any time without the consent of any person.

NOW, THEREFORE, in accordance with § 718.104(4)(e), Florida Statutes, Developer hereby amends the Declaration by including therein Exhibit "A" attached to this Amendment.

IN WITNESS WHEREOF, Developer has executed this Amendment on the date set forth above.

Signed, sealed and delivered in the presence of:

MINTO BUILDERS (FLORIDA), INC., a Florida corporation (SEAL)

[Signature]
Mary Mershauff

By: [Signature]
Michael Greenberg, Pres.

STATE OF FLORIDA)
) ss:
COUNTY OF BROWARD)

The foregoing Amendment was acknowledged before me this 4th day of October, 1984, by Michael Greenberg, President of Minto Builders (Florida), Inc., a Florida corporation, on behalf of the corporation.

NOTARY PUBLIC STATE OF FLORIDA
WILLIAM E. GENERAL INS. UND.
COMMISSION EXPIRES SEPT. 18, 1985

[Signature]
Notary Public,
State of Florida at Large
[Notary Seal]

My commission expires:

Prepared by the Office of:
HOLLAND & KNIGHT
By: Irwin J. Fayne, Esq.
One Corporate Plaza
110 East Broward Boulevard
Sixteenth Floor
Fort Lauderdale, Florida 33301

870700000a1003:75
10/03/84

Return to: Gold Coast Title Co.
75 S. E. 3rd Street
Boca Raton, Florida 33432

84 OCT 4 PM 1:16

REF 12041 PAGE 621

298

EXHIBIT "A"

EXHIBIT "B" TO DECLARATION OF CONDOMINIUM OF KARANDA VILLAGE IV - "A", A CONDOMINIUM

CERTIFICATION:

THE UNDERSIGNED SURVEYING FIRM CERTIFIES THAT THE CONSTRUCTION OF THE IMPROVEMENTS TO COMPRISE BUILDINGS 4, 5, 11 AND 12 KARANDA VILLAGE IV - "A", A CONDOMINIUM, IS SUBSTANTIALLY COMPLETE SO THAT THE MATERIAL WHICH COMPRISES THIS EXHIBIT "B" - TO THE DECLARATION OF CONDOMINIUM OF KARANDA VILLAGE IV - "A", A CONDOMINIUM, TOGETHER WITH THE PROVISIONS OF SAID DECLARATION OF CONDOMINIUM DESCRIBING THE CONDOMINIUM PROPERTY, ARE AN ACCURATE REPRESENTATION OF THE LOCATION AND DIMENSIONS OF SAID IMPROVEMENTS, AND THE IDENTIFICATION, LOCATION, AND DIMENSIONS OF THE COMMON ELEMENTS WITHIN THE CONDOMINIUM AND OF EACH UNIT WITHIN THE CONDOMINIUM CAN BE DETERMINED FROM SAID MATERIALS. FURTHER, ALL PLANNED IMPROVEMENTS, INCLUDING, BUT NOT LIMITED TO LANDSCAPING, UTILITY SERVICES AND ACCESS TO BUILDINGS 4, 5, 11 AND 12 COMMON ELEMENT FACILITIES SERVING BUILDINGS 4, 5, 11 AND 12 AS SET FORTH IN SAID DECLARATION ARE SUBSTANTIALLY COMPLETED.

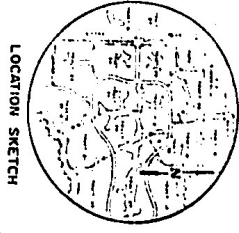
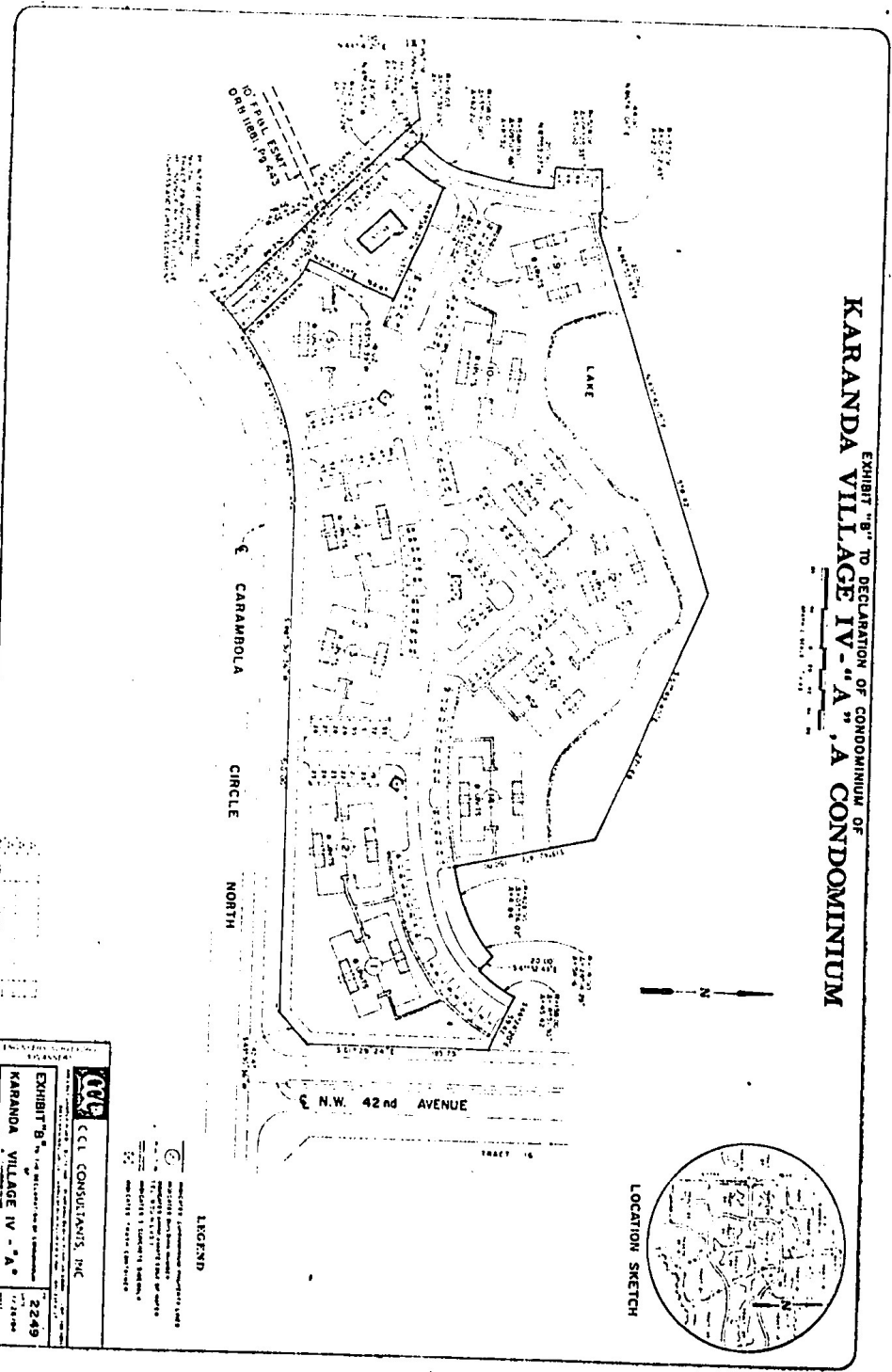
CCL CONSULTANTS, INC.

12/1/00
DATE

I. Ma M. Mohamed
ISHMAEL S. MOHAMED
REGISTERED LAND SURVEYOR #2464
STATE OF FLORIDA

OFF 12041 P&E 622

EXHIBIT "B" TO DECLARATION OF CONDOMINIUM OF
KARANDA VILLAGE IV - "A", A CONDOMINIUM



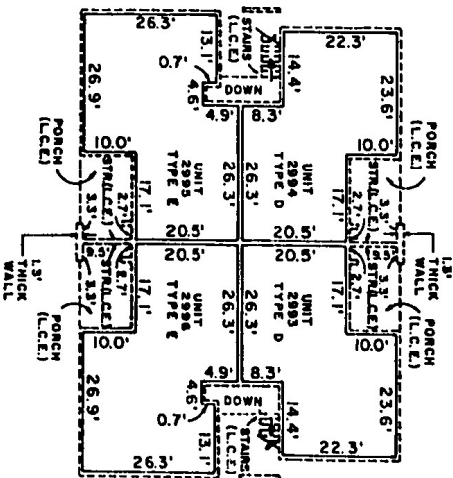
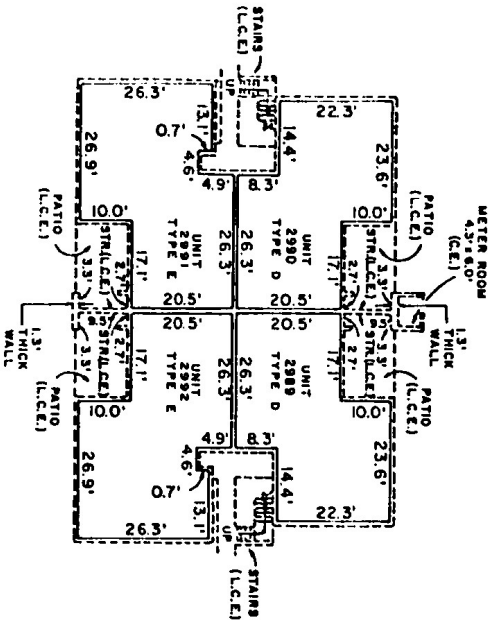
CCP
CCL CONSULTANTS, INC.
EXHIBIT "B" TO DECLARATION OF CONDOMINIUM OF
KARANDA VILLAGE IV - "A"
2249
6417

LEGEND
 (Symbol) Proposed Condominium Project's Lake
 (Symbol) Proposed Condominium Project's Building
 (Symbol) Proposed Condominium Project's Access
 (Symbol) Proposed Condominium Project's Other

EXHIBIT 'B' TO DECLARATION OF CONDOMINIUM OF KARANDA VILLAGE IV - "A" A CONDOMINIUM BUILDING 12



OFF REC 12041 PAGE 627



DESCRIPTION OF COMMON ELEMENTS

- 1) ALL LAND AND ALL PORTIONS OF CONDOMINIUM PROPERTY NOT WITHIN ANY UNIT OR UNITS, ARE PARTS OF THE COMMON ELEMENTS.
- 2) ALL SEASING WALLS TO THE UNFINISHED SURFACE OF SAID WALLS LOCATED WITHIN A UNIT, CONSTITUTE PARTS OF THE COMMON ELEMENTS.
- 3) ALL CONDUITS AND WIRES TO OUTLETS, ALL OTHER UTILITY LINES TO OUTLETS AND WASTE PIPES, REGARDLESS OF LOCATION, CONSTITUTE PARTS OF THE COMMON ELEMENTS.
- 4) THE COMMON ELEMENTS ARE SUBJECT TO CERTAIN EASEMENTS SET FORTH IN THE DECLARATION INCLUDING INGRESS AND EGRESS TO PORCHWAYS.

NOTES

- 1) THIS PLAN IS COMPILED FROM PLANS AND DATA FURNISHED BY HINTO BUILDERS (FLORIDA), INC. A FIELD SURVEY AND MEASUREMENTS AS DEEMED NECESSARY BY C.C.L. CONSULTANTS, INC.
- 2) ALL WALLS ARE 0.65" THICK UNLESS OTHERWISE NOTED.
- 3) ELEVATIONS (WHERE DESIGNATED) SHOWN IN FEET, ARE BASED ON MEAN SEA LEVEL DATUM.
- 4) FOR FURTHER DATA REGARDING BOUNDARIES OF THIS UNIT REFER TO THE DECLARATION OF THIS CONDOMINIUM.
- 5) DIMENSIONS SET FORTH IN THE DECLARATION ARE INCORPORATED HEREIN.

LEGEND

| | |
|----------|------------------------|
| --- | RIGHTS NOT DESIGNATED |
| --- | RIGHTS COMMON ELEMENTS |
| (C) | RIGHTS COMMON ELEMENTS |
| (L.C.E.) | RIGHTS COMMON ELEMENTS |
| (S) | RIGHTS COMMON ELEMENTS |
| (M) | RIGHTS COMMON ELEMENTS |
| (D) | RIGHTS COMMON ELEMENTS |
| (E) | RIGHTS COMMON ELEMENTS |
| (N) | RIGHTS COMMON ELEMENTS |
| (O) | RIGHTS COMMON ELEMENTS |
| (P) | RIGHTS COMMON ELEMENTS |
| (R) | RIGHTS COMMON ELEMENTS |
| (T) | RIGHTS COMMON ELEMENTS |
| (U) | RIGHTS COMMON ELEMENTS |
| (V) | RIGHTS COMMON ELEMENTS |
| (W) | RIGHTS COMMON ELEMENTS |
| (X) | RIGHTS COMMON ELEMENTS |
| (Y) | RIGHTS COMMON ELEMENTS |
| (Z) | RIGHTS COMMON ELEMENTS |

CCL CONSULTANTS, INC.

KARANDA VILLAGE IV "A"
A CONDOMINIUM
BUILDING 12

2249
728/24
15817

RECORDED IN THE OFFICIAL RECORDS BOOK
OF BROWARD COUNTY, FLORIDA
F. T. JOHNSON
COUNTY ADMINISTRATOR