

42.00

BARBARA T. SCOTT, CLERK  
CHARLOTTE COUNTY  
OR BOOK 1757 PAGE 1346  
RECORDED 12/23/99 @ 02:39 PM  
FILE NUMBER 695121  
RECORDING FEE 42.00

This Instrument Prepared By:

Sam D. Norton, Esq.  
NORTON, GURLEY, HAMMERSLEY  
& LOPEZ, P.A.  
1819 Main Street, Suite 610  
Sarasota, FL 34236



SECOND AMENDMENT TO DECLARATION OF CONDOMINIUM

OF

LIVE OAK LANDINGS, A CONDOMINIUM

KNOW ALL MEN BY THESE PRESENTS, that LIVE OAK LANDINGS, INC., a Delaware corporation, hereinafter called "Developer", does hereby amend that certain Declaration of Condominium of LIVE OAK LANDINGS, A CONDOMINIUM recorded in Official Records Book 1561, Page 1785, as amended by that certain First Amendment to Declaration of Condominium recorded in Official Records Book 1561, Page 1866 both of the Public Records of Charlotte County, Florida, for the purpose of recording the Certificate of Surveyor and Mapper as required by Florida Statute Section 718.104 and to reflect the amendment to the Condominium Plat.

The Condominium Plat of Live Oak Landings, a Condominium, recorded in Condominium Book 10, Pages 76A through 76H, inclusive, Public Records of Charlotte County, Florida, is hereby amended by that certain amended Condominium Plat attached hereto as Exhibit "A" and further amended by the Certificate of Substantial Completion of Surveyor and Mapper, attached hereto as Exhibit "B".

Return to Norton, Gurley, Hammersley 176-100

IMAGED GK

IN WITNESS WHEREOF, the undersigned have executed this Second Amendment to Declaration of Condominium of Live Oak Landings, a condominium, this 16<sup>th</sup> day of December, 1999.

WITNESSES:

LIVE OAK LANDINGS, INC., a Delaware corporation,

Cyndi L Anderson  
Print Name: CYNDIL ANDERSON  
Sandra Suchoval  
Print Name: SANDRA SUCHOVAL

By: Daniel C. Solaz  
Daniel C. Solaz, as its Vice President

STATE OF FLORIDA  
COUNTY OF SARASOTA

The foregoing instrument was acknowledged before me this 16<sup>th</sup> day of December, 1999, by Daniel C. Solaz, as Vice President of Live Oak Landings, Inc., a Florida corporation, on behalf of the corporation and is personally known to me.



Cyndi L Anderson  
Name: \_\_\_\_\_  
Notary Public

My Commission Expires:

### Description: (PHASE IV)

A parcel of Land being a portion of Lots 6 and 7, R. CLARENCE BROWN'S SUBDIVISION, recorded in Plat Book 2, Page 53, Public Records of Charlotte County, Florida. All lying and being in Section 12, Township 41 South, Range 19 East, Charlotte County, Florida, described as follows:

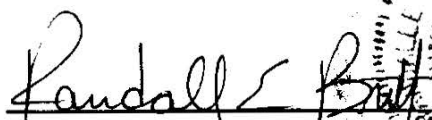
Commencing at the Southwest Corner of Lot 7, R. CLARENCE BROWN'S SUBDIVISION, recorded in Plat Book 2, Page 53, Public Records of Charlotte County, Florida, also being a point on the easterly Right of Way Line of NORTH BEACH ROAD (County Road # 776, 75' wide); thence N.89°55'35"E., along the South line of said Lot 7, a distance of 23.28 feet to the POINT OF BEGINNING; thence N.00°04'25"W., a distance of 5.50 feet; thence N.29°18'18"W., a distance of 125.24 feet to a point on a curve to the right, having: a radius of 10.00 feet, a central angle of 22°23'08", a tangent length of 1.98 feet, a chord bearing of N.78°48'26"E. and a chord length of 3.88 feet; thence along the arc of said curve, an arc length of 3.91 feet to the point of tangency of said curve; thence EAST, a distance of 47.53 feet to the point of curvature of a curve to the right, having: a radius of 10.00 feet, a central angle of 62°07'22", a tangent length of 6.02 feet, a chord bearing of S.58°56'19"E. and a chord length of 10.32 feet; thence along the arc of said curve, an arc length of 10.84 feet to the point of tangency of said curve; thence S.27°52'38"E., a distance of 29.87 feet; thence S.45°00'00"E., a distance of 19.46 feet; thence SOUTH, a distance of 69.95 feet to a point on said South line of Lot 7; thence S.89°55'35"W., along said South line of Lot 7, a distance of 26.32 feet to the POINT OF BEGINNING.

Parcel contains 5627 square feet or 0.13 acres, more or less.

#### CERTIFICATE OF SURVEYOR AND MAPPER:

I, the undersigned Professional Land Surveyor, do hereby certify that:

1. This Certificate is made with respect to Live Oak Landings, a Condominium, as shown on the condominium plat recorded in Condominium Book 10, Page 76, of the public Records of Charlotte County, Florida.
2. The construction of the improvements of Units 13, through 15, Phase IV, of said condominium are substantially complete, so that the survey, graphic description and plot plan, together with the provisions of the declaration describing the condominium property, is an accurate representation of the location and dimensions of the improvements and so that the identification, location, dimensions of common elements and of each unit within said Phase IV can be determined from said materials.
3. Relative to the units referenced in Paragraph 2 above, all planned improvements, including, but not limited to, landscaping, utility services and access to units and common element facilities serving the buildings in which the units for Phase IV are located have been substantially complete.

  
 RANDALL E. BRITT, PROFESSIONAL LAND SURVEYOR, FLA. CERT. NO. 3979  
 NOTE: NOT VALID UNLESS IMPRINTED WITH EMBOSSED SURVEYOR'S SEAL

NOTE: Amendment as to Phase IV only. Showing record location and dimensions of units and common elements of Phase IV only.

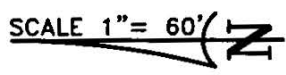


# LIVE OAK LANDINGS

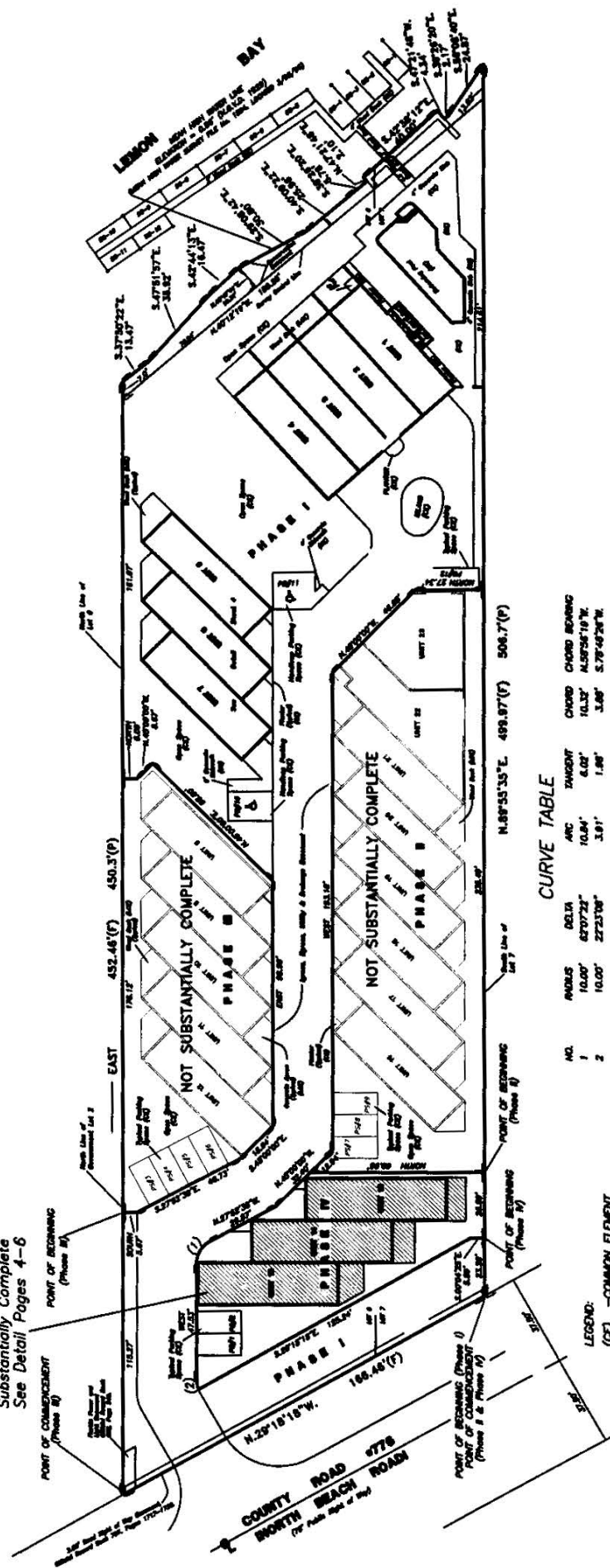
## A CONDOMINIUM

### PHASE IV

Being In Section 12, Township 41 South  
Range 19 East, Charlotte County, Florida



Units 13, 14 & 15  
Substantially Complete  
See Detail Pages 4-6



**CURVE TABLE**

NO.	RADIUS	DELTA	ARC	TANGENT	CHORD	CHORD BEARING
1	10.00'	62°07'22"	10.84'	6.02'	10.12'	A32°55'19" E
2	10.00'	27°23'08"	3.91'	1.96'	3.68'	S78°49'28" W

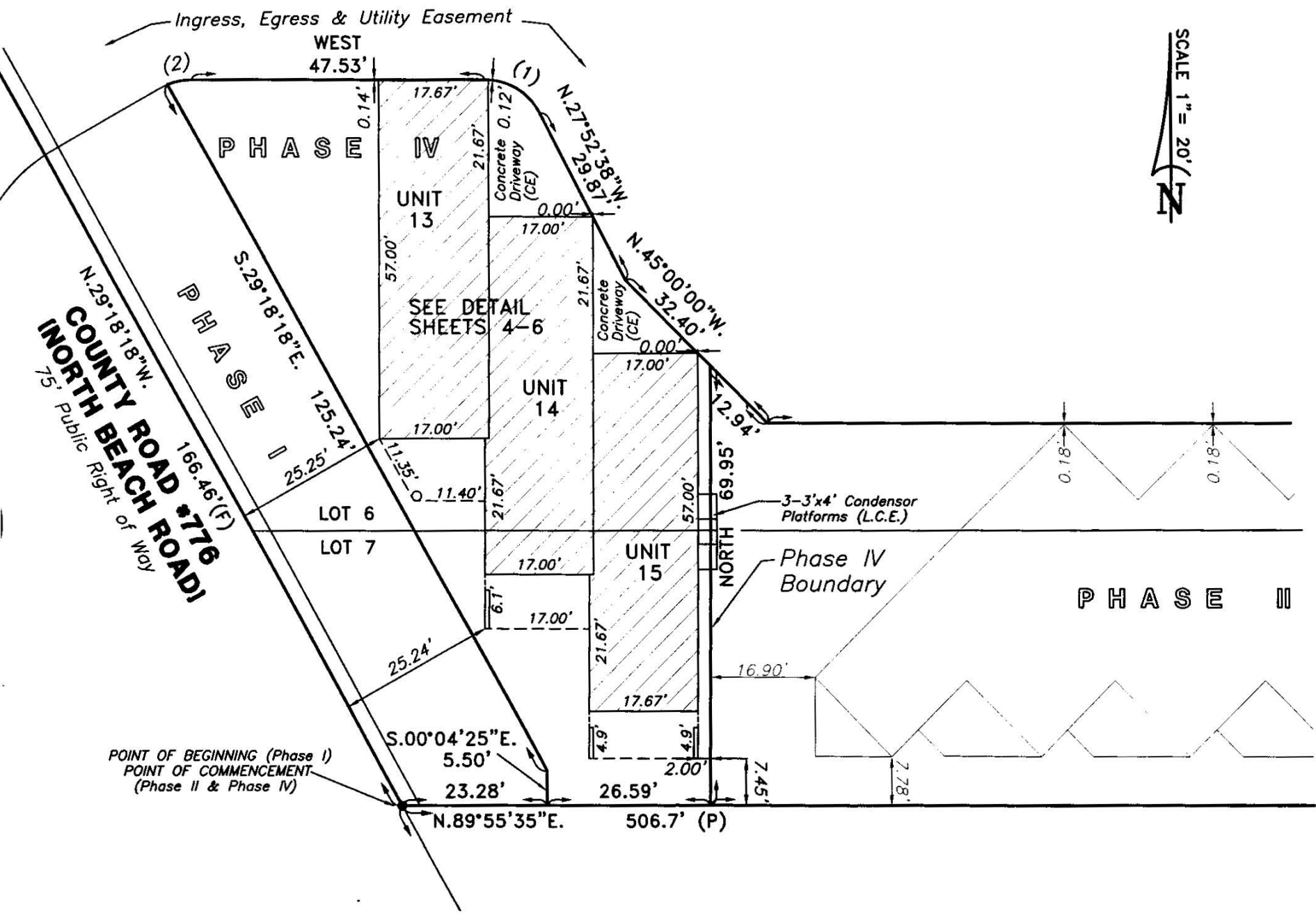
**LEGEND:**  
 (CE) - COMMON ELEMENT  
 (LCE) - LIMITED COMMON ELEMENT  
 PS - PARKING SPACE

LIVE OAK LANDINGS  
A CONDOMINIUM

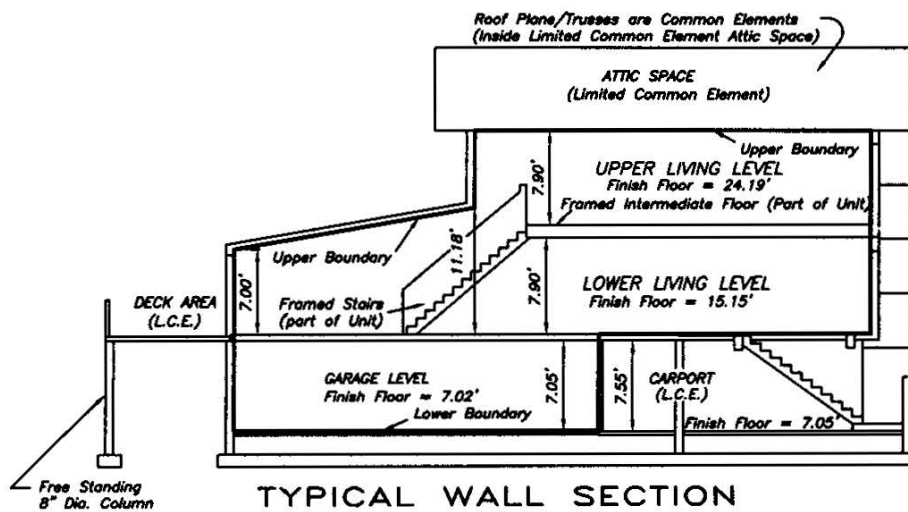
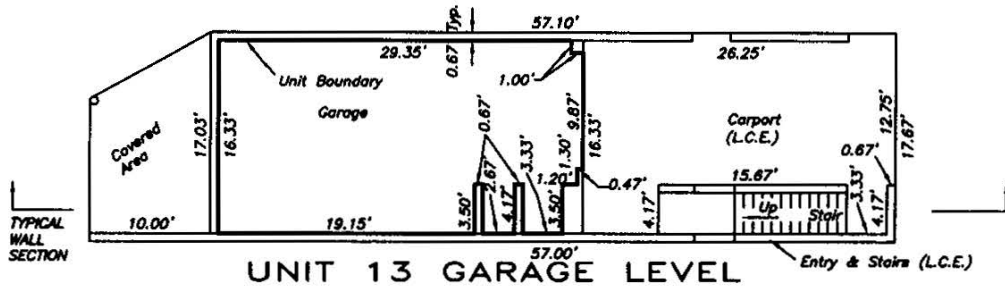
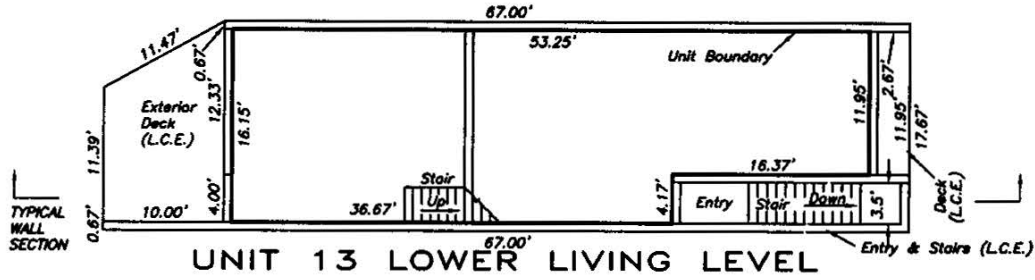
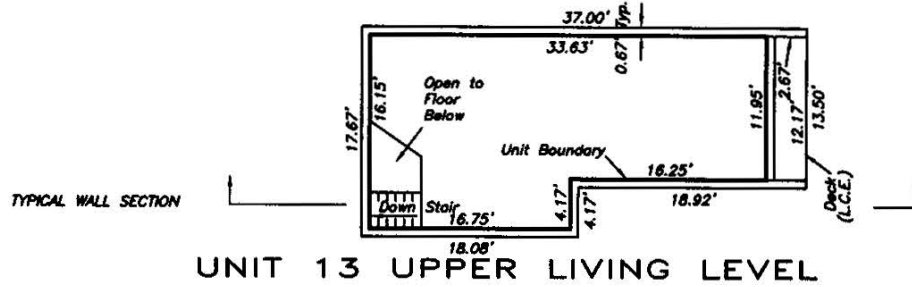
PHASE IV

Being in Section 12, Township 41 South  
Range 19 East, Charlotte County, Florida

SCALE 1" = 20'



PHASE IV  
 Being in Section 12, Township 41 South  
 Range 19 East, Charlotte County, Florida



NOTE:

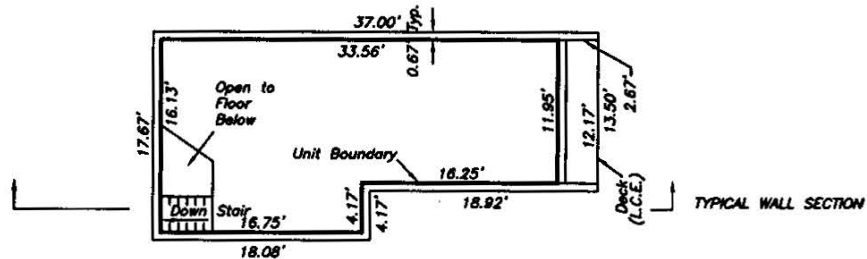
1. ALL DECKS ARE LIMITED COMMON ELEMENTS.
2. ELEVATIONS SHOWN HEREON REFER TO DNR MONUMENT #R 8, ELEVATION = 8.87 FEET (NGVD 1929).

LEGEND:

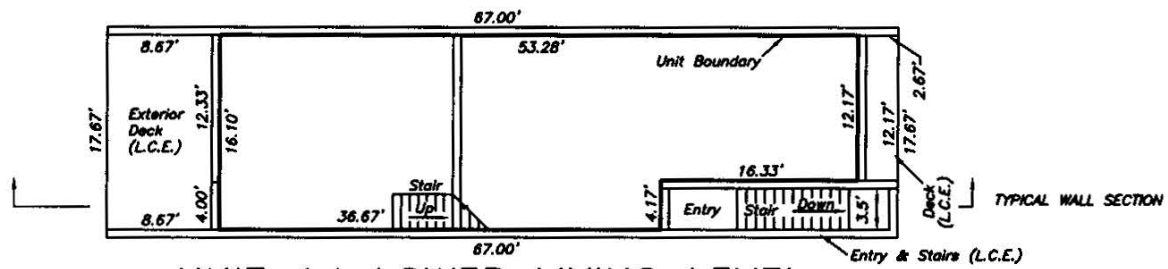
- (CE) -COMMON ELEMENT
- (LCE) -LIMITED COMMON ELEMENT



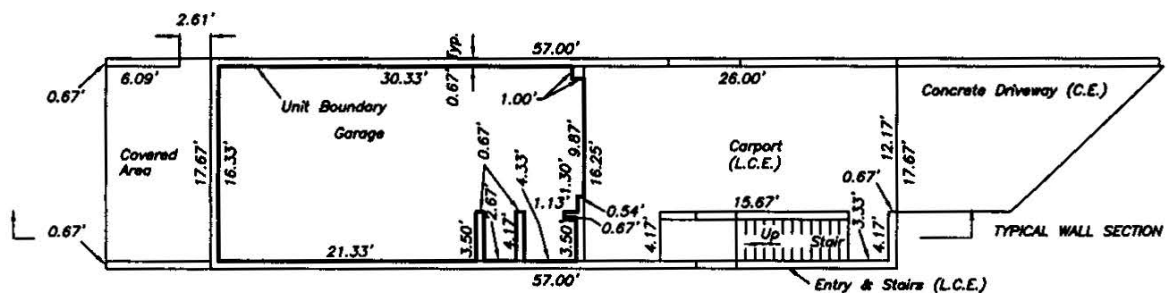
PHASE IV  
 Being in Section 12, Township 41 South  
 Range 19 East, Charlotte County, Florida



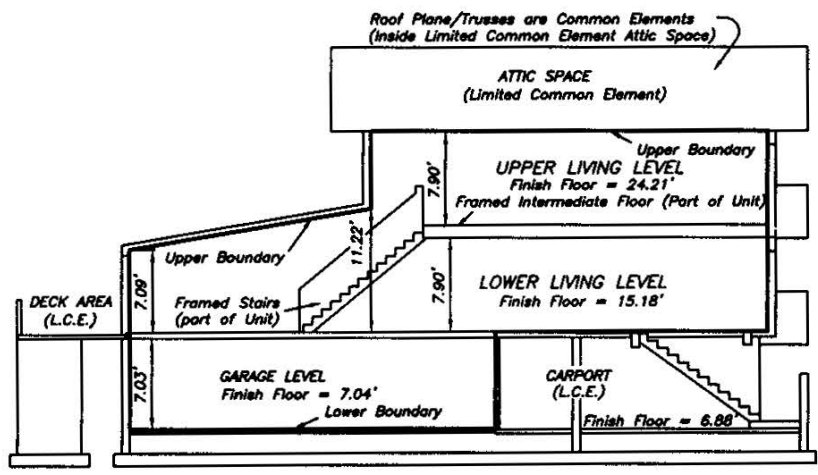
UNIT 14 UPPER LIVING LEVEL



UNIT 14 LOWER LIVING LEVEL



UNIT 14 GARAGE LEVEL



TYPICAL WALL SECTION

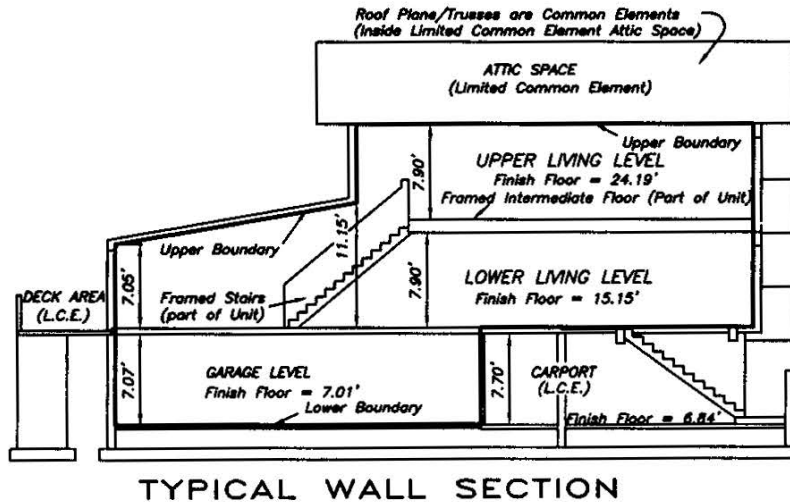
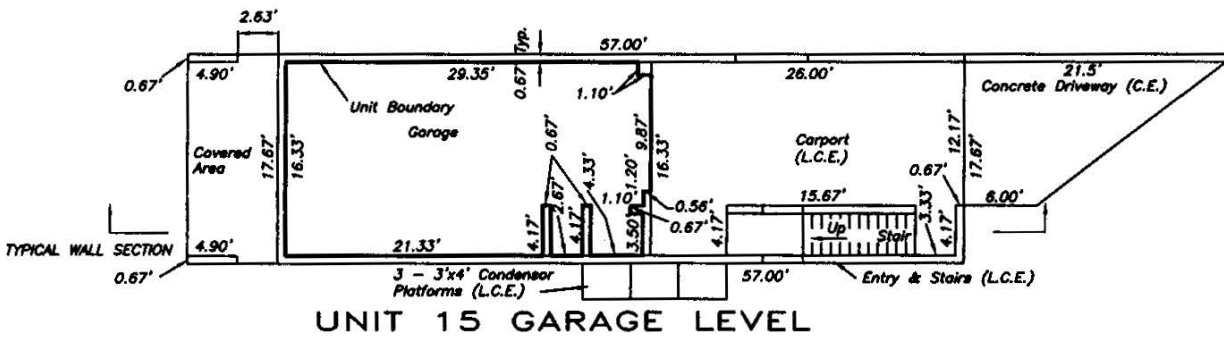
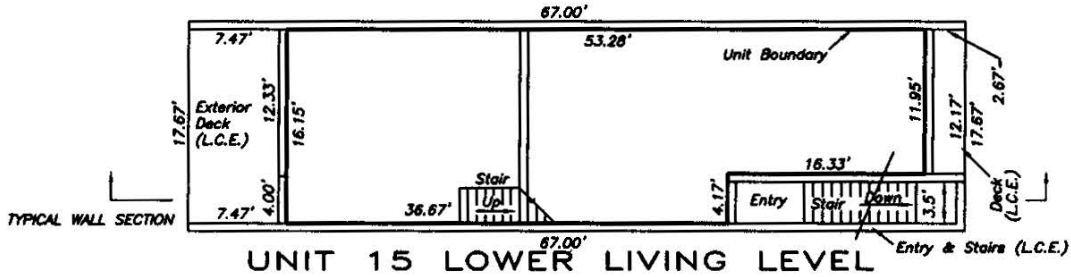
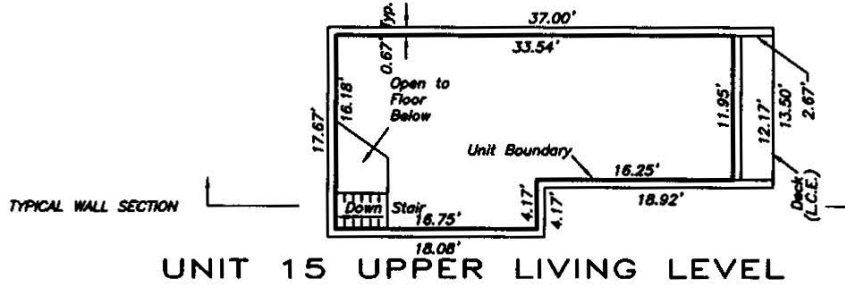
NOTE:

1. ALL DECKS ARE LIMITED COMMON ELEMENTS.
2. ELEVATIONS SHOWN HEREON REFER TO DNR MONUMENT #R 8, ELEVATION = 8.87 FEET (NGVD 1929).

LEGEND:

- (CE) -COMMON ELEMENT
- (LCE) -LIMITED COMMON ELEMENT

PHASE IV  
 Being In Section 12, Township 41 South  
 Range 19 East, Charlotte County, Florida



NOTE:

1. ALL DECKS ARE LIMITED COMMON ELEMENTS.
2. ELEVATIONS SHOWN HEREON REFER TO DNR MONUMENT #R 8, ELEVATION = 8.87 FEET (NGVD 1929).

LEGEND:

- (CE) -COMMON ELEMENT
- (LCE) -LIMITED COMMON ELEMENT



**BRITT SURVEYING, INC.**

LAND SURVEYORS AND MAPPERS

CERTIFICATE OF AUTHORIZATION NO. 118 8470

**Description: (PHASE IV)**

A parcel of Land being a portion of Lots 6 and 7, R. CLARENCE BROWN'S SUBDIVISION, recorded in Plat Book 2, Page 53, Public Records of Charlotte County, Florida. All lying and being in Section 12, Township 41 South, Range 19 East, Charlotte County, Florida, described as follows:

Commencing at the Southwest Corner of Lot 7, R. CLARENCE BROWN'S SUBDIVISION, recorded in Plat Book 2, Page 53, Public Records of Charlotte County, Florida, also being a point on the easterly Right of Way Line of NORTH BEACH ROAD (County Road # 776, 75' wide); thence N.89°55'35"E., along the South line of said Lot 7, a distance of 23.28 feet to the POINT OF BEGINNING; thence N.00°04'25"W., a distance of 5.50 feet; thence N.29°18'18"W., a distance of 125.24 feet to a point on a curve to the right, having: a radius of 10.00 feet, a central angle of 22°23'08", a tangent length of 1.98 feet, a chord bearing of N.78°48'26"E. and a chord length of 3.88 feet; thence along the arc of said curve, an arc length of 3.91 feet to the point of tangency of said curve; thence EAST, a distance of 47.53 feet to the point of curvature of a curve to the right, having: a radius of 10.00 feet, a central angle of 62°07'22", a tangent length of 6.02 feet, a chord bearing of S.58°56'19"E. and a chord length of 10.32 feet; thence along the arc of said curve, an arc length of 10.84 feet to the point of tangency of said curve; thence S.27°52'38"E., a distance of 29.87 feet; thence S.45°00'00"E., a distance of 19.46 feet; thence SOUTH, a distance of 69.95 feet to a point on said South line of Lot 7; thence S.89°55'35"W., along said South line of Lot 7, a distance of 26.32 feet to the POINT OF BEGINNING.

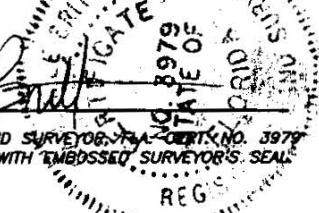
Parcel contains 5627 square feet or 0.13 acres, more or less.

**CERTIFICATE OF SURVEYOR AND MAPPER:**

I, the undersigned Professional Land Surveyor, do hereby certify that:

1. This Certificate is made with respect to Live Oak Landings, a Condominium, as shown on the condominium plat recorded in Condominium Book 10, Page 76, of the public Records of Charlotte County, Florida.
2. The construction of the improvements of Units 13, through 15, Phase IV, of said condominium are substantially complete, so that the survey, graphic description and plot plan, together with the provisions of the declaration describing the condominium property, is an accurate representation of the location and dimensions of the improvements and so that the identification, location, dimensions of common elements and of each unit within said Phase IV can be determined from said materials.
3. Relative to the units referenced in Paragraph 2 above, all planned improvements, including, but not limited to, landscaping, utility services and access to units and common element facilities serving the buildings in which the units for Phase IV are located have been substantially complete.

*Randall E. Britt*  
 RANDALL E. BRITT, PROFESSIONAL LAND SURVEYOR, FLA. CERT. NO. 3979  
 NOTE: NOT VALID UNLESS IMPRINTED WITH EMBOSSED SURVEYOR'S SEAL



NOTE: Amendment as to Phase IV only. Showing record location and dimensionsof units and common elements of Phase IV only.