

AMENDMENT

84-427881

DEC 19 2 13 PM '84

This Amendment dated December 16, 1984, by MINTO BUILDERS (FLORIDA), INC., a Florida corporation ("Developer").

WITNESSETH:

WHEREAS, Developer recorded that certain Declaration of Condominium of Karanda Village IV - "B", a Condominium, in O.R. Book 12179 at Page 257 of the Public Records of Broward County, Florida ("Declaration"); and

WHEREAS, Buildings Nos. 17, 18, 19, 20 and 21 of said condominium were not complete at the time of recordation of the Declaration; and

WHEREAS, said Buildings Nos. 17, 18, 19, 20 and 21 are now substantially complete and Developer desires to amend the Surveyor's Certificate attached as Exhibit "B" to said Declaration in order to reflect this fact; and

WHEREAS, Article 8.B. of the Declaration provides that same may be amended by the Developer at any time without the consent of any person.

NOW, THEREFORE, in accordance with §718.104(4)(e), Florida Statutes, Developer hereby amends the Declaration by including therein Exhibit "A" attached to this Amendment.

IN WITNESS WHEREOF, Developer has executed this Amendment on the date set forth above.

Signed, sealed and delivered in the presence of:

MINTO BUILDERS (FLORIDA), INC., a Florida corporation (SEAL)

[Signature]
[Signature]

By: [Signature]

STATE OF FLORIDA)
) ss:
COUNTY OF BROWARD)

The foregoing Amendment was acknowledged before me this 16th day of December, 1984, by Michael Greenberg, President of Minto Builders (Florida), Inc., a Florida corporation, on behalf of the corporation.

NOTARY PUBLIC STATE OF FLORIDA
MY COMMISSION EXPIRES SEPT. 18, 1985

[Signature]
Notary Public,
State of Florida at Large

My commission expires:

Prepared by the Office of:

HOLLAND & KNIGHT
By: Irwin J. Fayne, Esq.
One Corporate Plaza
110 East Broward Boulevard
Sixteenth Floor
Fort Lauderdale, Florida 33301

870700069am1217:84

Return to: Gold Coast Title Co.
75 S. E. 3rd Street
Boca Raton, Florida 33432

W/C

33 OH

OFF 12204 PAGE 97

EXHIBIT "A"

EXHIBIT "B" TO DECLARATION OF CONDOMINIUM OF
KARANDA VILLAGE IV - "B", A CONDOMINIUM

CERTIFICATION:

THE UNDERSIGNED SURVEYING FIRM CERTIFIES THAT THE CONSTRUCTION OF THE IMPROVEMENTS TO COMPRISE BUILDINGS 17, 18, 19, 20 AND 21 KARANDA VILLAGE IV - "B", A CONDOMINIUM, IS SUBSTANTIALLY COMPLETE SO THAT THE MATERIAL WHICH COMPRISES THIS EXHIBIT "B" - TO THE DECLARATION OF CONDOMINIUM OF KARANDA VILLAGE IV - "B", A CONDOMINIUM, TOGETHER WITH THE PROVISIONS OF SAID DECLARATION OF CONDOMINIUM DESCRIBING THE CONDOMINIUM PROPERTY, ARE AN ACCURATE REPRESENTATION OF THE LOCATION AND DIMENSIONS OF SAID IMPROVEMENTS, AND THE IDENTIFICATION, LOCATION, AND DIMENSIONS OF THE COMMON ELEMENTS WITHIN THE CONDOMINIUM AND OF EACH UNIT WITHIN THE CONDOMINIUM CAN BE DETERMINED FROM SAID MATERIALS. FURTHER, ALL PLANNED IMPROVEMENTS, INCLUDING, BUT NOT LIMITED TO LANDSCAPING, UTILITY SERVICES AND ACCESS TO BUILDINGS 17, 18, 19, 20 AND 21 COMMON ELEMENT FACILITIES SERVING BUILDINGS 17, 18, 19, 20 AND 21 AS SET FORTH IN SAID DECLARATION ARE SUBSTANTIALLY COMPLETED.

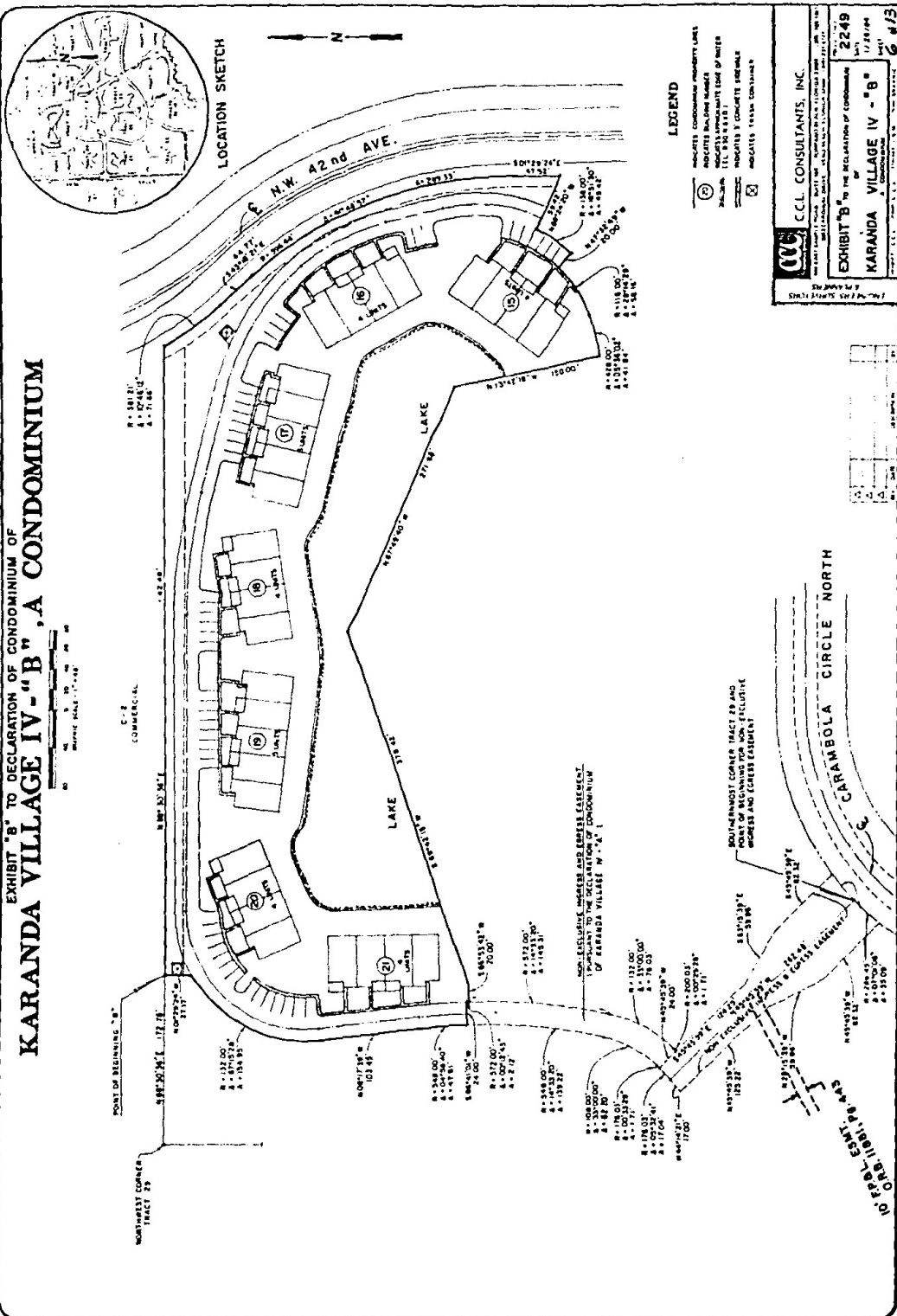
CCL CONSULTANTS, INC.

12/1/82
DATE

Ishmael S. Mohamed
ISHMAEL S. MOHAMED
REGISTERED LAND SURVEYOR #2464
STATE OF FLORIDA

DEF 12204 PAGE 98

EXHIBIT 'B' TO DECLARATION OF CONDOMINIUM OF KARANDA VILLAGE IV - "B" - A CONDOMINIUM



CCL CONSULTANTS, INC.

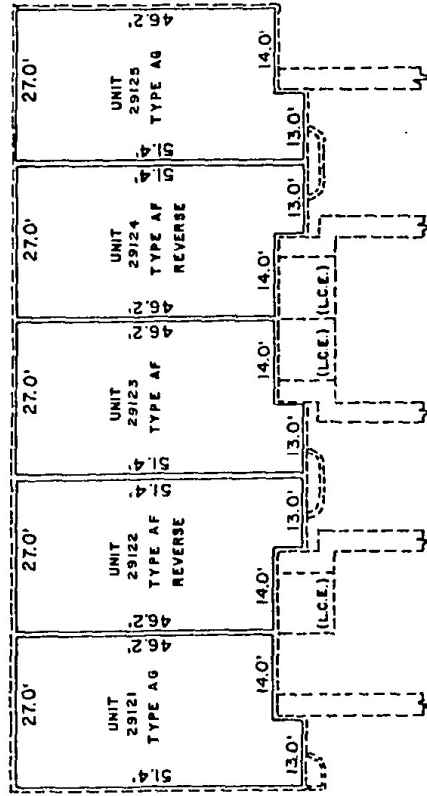
EXHIBIT 'B' TO THE DECLARATION OF CONDOMINIUM OF KARANDA VILLAGE IV - "B" - A CONDOMINIUM

2249

1/28/94

6/1/93

EXHIBIT 'B' TO DECLARATION OF CONDOMINIUM OF KARANDA VILLAGE IV-"B" A CONDOMINIUM BUILDING 17



MINIMUM UPPER LIMITS OF UNIT 23.10 M.S.L. ELEV.
MINIMUM LOWER LIMITS OF UNIT 15.00 M.S.L. ELEV.

OFF REC 12204 PAGE 100

DESCRIPTION OF COMMON ELEMENTS

- 1.) ALL LAND AND ALL PORTIONS OF CONDOMINIUM PROPERTY NOT WITHIN ANY UNIT OR UNITS, ARE PARTS OF THE COMMON ELEMENTS.
- 2.) ALL BEARING WALLS TO THE UNFINISHED SURFACE OF SAID WALLS LOCATED WITHIN A UNIT, CONSTITUTE PARTS OF THE COMMON ELEMENTS.
- 3.) ALL CONDUITS AND WIRES TO OUTLETS, ALL OTHER UTILITY LINES TO OUTLETS AND ALL WASTE PIPES, REGARDLESS OF LOCATION, CONSTITUTE PARTS OF THE COMMON ELEMENTS.
- 4.) THE COMMON ELEMENTS ARE SUBJECT TO CERTAIN EASEMENTS SET FORTH IN THE DECLARATION INCLUDING INGRESS AND EGRESS TO PUBLIC WAYS.

NOTES

- 1.) THIS PLAN IS COMPILED FROM PLANS AND DATA FURNISHED BY MINTO BUILDERS (FLORIDA), INC. ARCHITECTURAL PLANS, SUPPLEMENTED BY SUCH FIELD SURVEY AND MEASUREMENTS AS DEEMED NECESSARY BY C.C.L. CONSULTANTS, INC.
- 2.) ALL WALLS ARE 0.65' THICK UNLESS OTHERWISE NOTED.
- 3.) ELEVATIONS (WHERE DESIGNATED) SHOWN IN FEET, ARE BASED ON MEAN SEA LEVEL DATUM.
- 4.) FOR FURTHER DATA REGARDING BOUNDARIES OF THIS UNIT REFER TO THE DECLARATION OF THIS CONDOMINIUM.
- 5.) DEFINITIONS SET FORTH IN THE DECLARATION ARE INCORPORATED HEREIN. '85-BUILT-12-12-84 M.D.

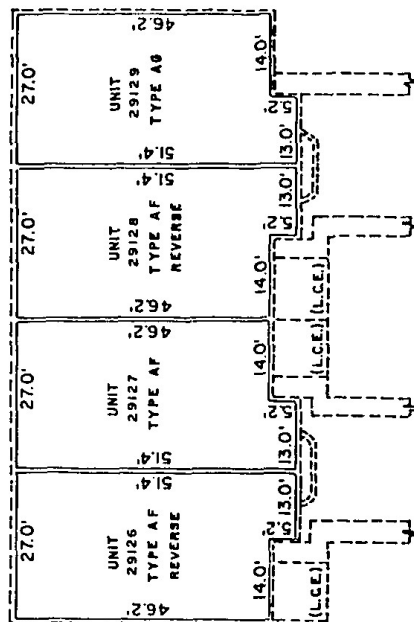
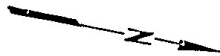
LEGEND

- (S.L.) LOCATES UNIT BOUNDARIES
- (C.C.) LOCATES COMMON ELEMENTS
- (L.C.E.) LOCATES COMMON ELEMENTS
- (R.) LOCATES LIMITED COMMON ELEMENTS
- (R.C.) LOCATES STORAGE
- (M.S.L. DATUM) LOCATES MEAN SEA LEVEL ELEVATION

C.C.L. CONSULTANTS, INC.
1000 N. W. 10th St., Ft. Lauderdale, FL 33304
Tel: (305) 555-1234

KARANDA VILLAGE IV "B"
A CONDOMINIUM
BUILDING 17
22/49
1/28/84
9 of 13

EXHIBIT 'B' TO DECLARATION OF CONDOMINIUM OF KARANDA VILLAGE IV - "B" A CONDOMINIUM BUILDING 18



MINIMUM UPPER LIMITS OF UNIT 23.10 M.S.L. ELEV.
MINIMUM LOWER LIMITS OF UNIT 15.05 M.S.L. ELEV.

T O 3987 0221 330
REC 1200 PAGE 101

DESCRIPTION OF COMMON ELEMENTS

- 1.) ALL LAND AND ALL PORTIONS OF CONDOMINIUM PROPERTY NOT WITHIN ANY UNIT OR UNITS, ARE PARTS OF THE COMMON ELEMENTS.
- 2.) ALL BEARING WALLS TO THE UNFINISHED SURFACE OF SAID WALLS LOCATED WITHIN A UNIT, CONSTITUTE PARTS OF THE COMMON ELEMENTS.
- 3.) ALL CONDUITS AND WIRES TO OUTLETS, ALL OTHER UTILITY LINES TO OUTLETS AND ALL WASTE PIPES, REGARDLESS OF LOCATION, CONSTITUTE PARTS OF THE COMMON ELEMENTS.
- 4.) THE COMMON ELEMENTS ARE SUBJECT TO CERTAIN EASEMENTS SET FORTH IN THE DECLARATION INCLUDING INGRESS AND EGRESS TO PUBLIC WAYS.

NOTES

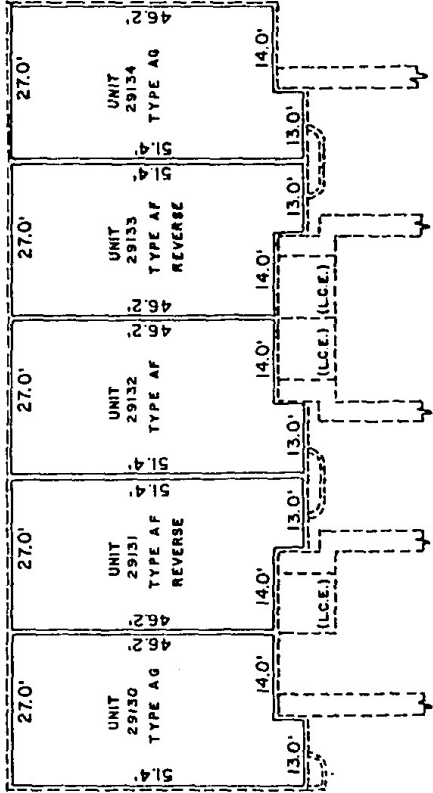
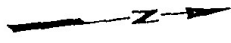
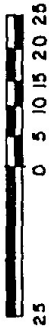
- 1.) THIS PLAN IS COMPILED FROM PLANS AND DATA FURNISHED BY MINTO BUILDERS (FLORIDA) INC ARCHITECTURAL PLANS, SUPPLEMENTED BY SUCH FIELD SURVEY AND MEASUREMENTS AS DEEMED NECESSARY BY C.C.L. CONSULTANTS, INC.
- 2.) ALL WALLS ARE 0.65' THICK UNLESS OTHERWISE NOTED.
- 3.) ELEVATIONS (WHERE DESIGNATED) SHOWN IN FEET, ARE BASED ON MEAN SEA LEVEL DATUM.
- 4.) FOR FURTHER DATA REGARDING BOUNDARIES OF THIS UNIT REFER TO THE DECLARATION OF THIS CONDOMINIUM.
- 5.) DEFINITIONS SET FORTH IN THE DECLARATION ARE INCORPORATED HEREIN. '95-BUILT " 12-12-84 M.D.

LEGEND

- (---) UNIT BOUNDARIES
- (---) INDICATES COMMON ELEMENTS
- (---) INDICATES COMMON ELEMENTS
- (---) INDICATES UNITED COMMON ELEMENTS
- (---) INDICATES STORAGE
- (---) INDICATES BALCONY
- (---) INDICATES MEAN SEA LEVEL ELEVATION

C.C.L. CONSULTANTS, INC.	
KARANDA VILLAGE IV "B"	
A CONDOMINIUM	2249
BUILDING 18	1/28/84
10 #13	10 #13

EXHIBIT "B" TO DECLARATION OF CONDOMINIUM OF KARANDA VILLAGE IV - "B" A CONDOMINIUM BUILDING 19



MINIMUM UPPER LIMITS OF UNIT 23.56 M.S.L. ELEV.
MINIMUM LOWER LIMITS OF UNIT 15.50 M.S.L. ELEV.

DEC 1 22 04 PAGE 1 02

DESCRIPTION OF COMMON ELEMENTS

- 1.) ALL LAND AND ALL PORTIONS OF CONDOMINIUM PROPERTY NOT WITHIN ANY UNIT OR UNITS, ARE PARTS OF THE COMMON ELEMENTS.
- 2.) ALL BEARING WALLS TO THE UNFINISHED SURFACE OF SAID WALLS LOCATED WITHIN A UNIT, CONSTITUTE PARTS OF THE COMMON ELEMENTS.
- 3.) ALL CONDUITS AND WIRES TO OUTLETS, ALL OTHER UTILITY LINES TO OUTLETS AND ALL WASTE PIPES, REGARDLESS OF LOCATION, CONSTITUTE PARTS OF THE COMMON ELEMENTS.
- 4.) THE COMMON ELEMENTS ARE SUBJECT TO CERTAIN EASEMENTS SET FORTH IN THE DECLARATION INCLUDING INGRESS AND EGRESS TO PUBLIC WAYS.

NOTES

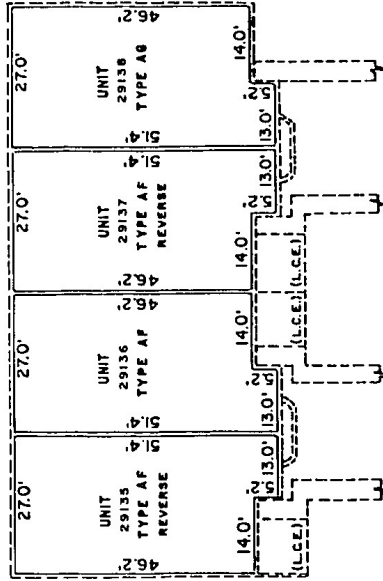
- 1.) THIS PLAN IS COMPILED FROM PLANS AND DATA FURNISHED BY MINTO BUILDERS (FLORIDA), INC. ARCHITECTURAL PLANS SUPPLEMENTED BY SUCH FIELD SURVEY AND MEASUREMENTS AS DEEMED NECESSARY BY C.C.L. CONSULTANTS, INC.
- 2.) ALL WALLS ARE 0.65' THICK UNLESS OTHERWISE NOTED.
- 3.) ELEVATIONS (WHERE DESIGNATED) SHOWN IN FEET, ARE BASED ON MEAN SEA LEVEL DATUM.
- 4.) FOR FURTHER DATA REGARDING BOUNDARIES OF THIS UNIT REFER TO THE DECLARATION OF THIS CONDOMINIUM.
- 5.) DEFINITIONS SET FORTH IN THE DECLARATION ARE INCORPORATED HEREIN. "AS-BUILT" 12-12-84 M.D.

LEGEND

- (C1) INDICATES UNIT ELEVATIONS
- (C2) INDICATES COMMON ELEMENTS
- (L.C.E.) INDICATES LOWER COMMON ELEMENTS
- (U.W.) INDICATES UNITS
- (B.C.E.) INDICATES BUILDING
- (M.S.L. ELEV.) INDICATES MEAN SEA LEVEL ELEVATION

C.C.L. CONSULTANTS, INC.
 KARANDA VILLAGE IV "B"
 A CONDOMINIUM
 BUILDING 19
 2249
 1/28/84
 11 # 13

EXHIBIT "B" TO DECLARATION OF CONDOMINIUM OF KARANDA VILLAGE IV - "B" A CONDOMINIUM BUILDING 20



MINIMUM UPPER LIMITS OF UNIT 23.23 M.S.L. ELEV.
MINIMUM LOWER LIMITS OF UNIT 75.78 M.S.L. ELEV.

DEC 1 1990 4 PAGE 103

LEGEND

- (C.L.) REGISTERED COMMON ELEMENTS
- (C.C.E.) REGISTERED COMMON ELEMENTS
- (S.P.) REGISTERED UNIT COMMON ELEMENTS
- (S.P.C.) REGISTERED STORAGE
- (S.P.L.C.E.) REGISTERED BALCONY
- (S.P.L.C.E.P.) REGISTERED PORCH OR PATIO

NOTES

- 1.) THIS PLAN IS COMPILED FROM PLANS AND DATA FURNISHED BY MINTO BUILDERS (PACIFIC), INC. ARCHITECTURAL PLANS, SURVEYED BY FIELD SURVEY AND MEASUREMENTS AS DEEMED NECESSARY BY C.C.L. CONSULTANTS, INC.
- 2.) ALL WALLS ARE 0.65" THICK UNLESS OTHERWISE NOTED.
- 3.) ELEVATIONS (WHERE DESIGNATED) SHOWN IN FEET, ARE BASED ON MEAN SEA LEVEL DATUM.
- 4.) FOR FURTHER DATA REGARDING BOUNDARIES OF THIS UNIT REFER TO THE DECLARATION OF THIS CONDOMINIUM.
- 5.) DEFINITIONS SET FORTH IN THE DECLARATION ARE INCORPORATED HEREIN. "P.S. BUILT" 12-12-84 M.D.

DESCRIPTION OF COMMON ELEMENTS

- 1.) ALL LAND AND ALL PORTIONS OF CONDOMINIUM PROPERTY NOT WITHIN ANY UNIT OR UNITS, ARE PARTS OF THE COMMON ELEMENTS.
- 2.) ALL BEARING WALLS TO THE UNFINISHED SURFACE OF SAID WALLS LOCATED WITHIN A UNIT, CONSTITUTE PARTS OF THE COMMON ELEMENTS.
- 3.) ALL CONDUITS AND WIRES TO OUTLETS, ALL OTHER UTILITY LINES TO OUTLETS AND ALL WASTE PIPES, REGARDLESS OF LOCATION, CONSTITUTE PARTS OF THE COMMON ELEMENTS.
- 4.) THE COMMON ELEMENTS ARE SUBJECT TO CERTAIN EASEMENTS SET FORTH IN THE DECLARATION INCLUDING INGRESS AND EGRESS TO PUBLIC WAYS.

REGISTERED UNIT BOUNDARIES

REGISTERED COMMON ELEMENTS

REGISTERED UNIT COMMON ELEMENTS

REGISTERED STORAGE

REGISTERED BALCONY

REGISTERED PORCH OR PATIO

C.C.L. CONSULTANTS, INC.

2249
1/28/84
12 of 13

